

PRODUCT INFO

The **LABEL_57 Movilift** board, is a cabin emergency lamp and it can also shows the plate and the lift capacity. You can do that putting a transparent film on the display.

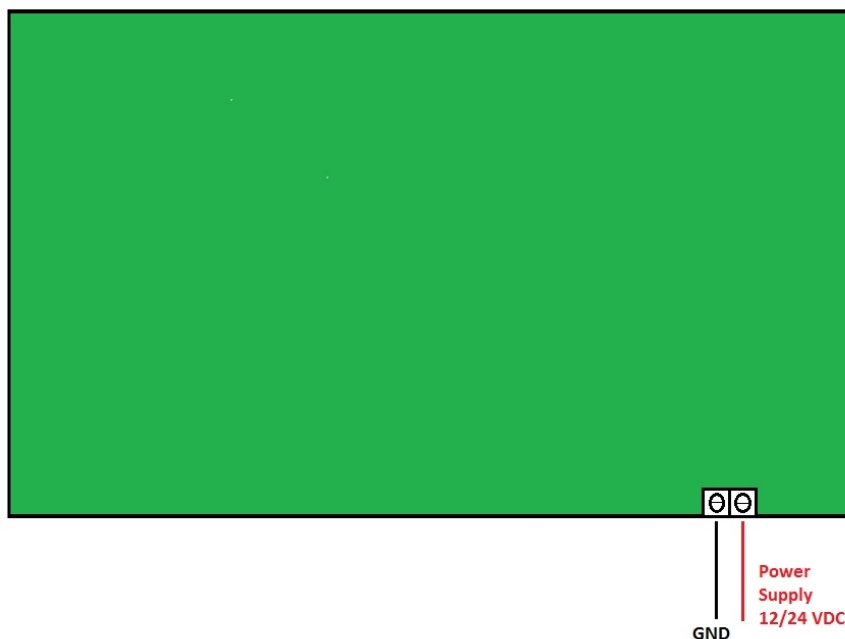


TECHNICAL DETAILS

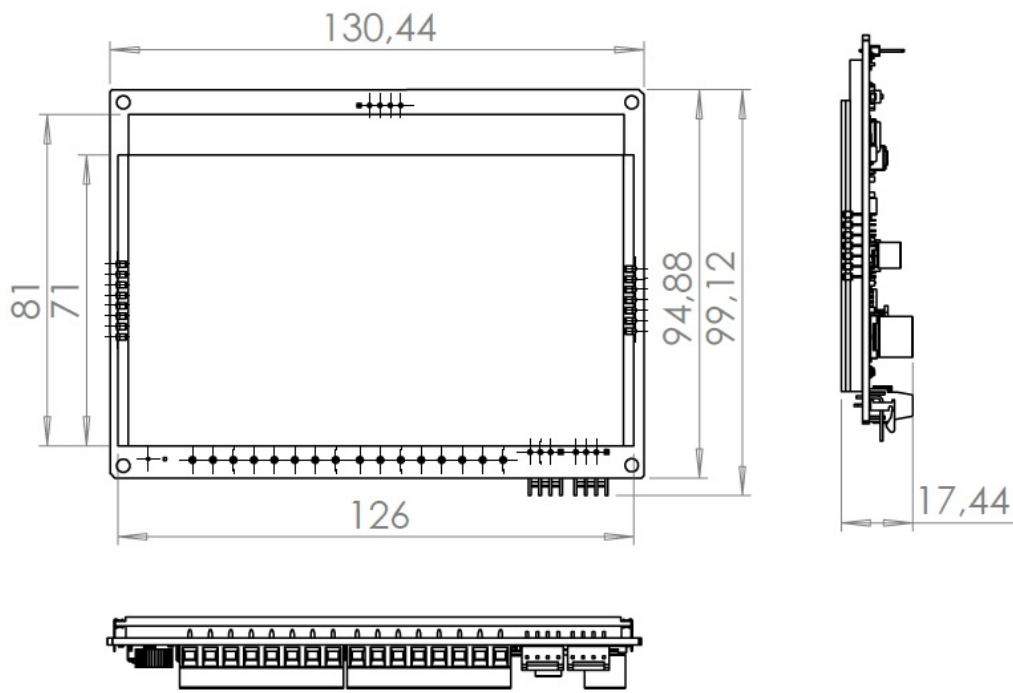
DIMENSIONS	130mm x 95mm
POWER SUPPLY	12-24 VDC \pm 10%
WEIGHT	g. 40
COMMUNICATION	Nothing
PROGRAMMATION	No programmation is required
POWER	Board in standby 0 W (12VDC) Maximum power 100mW (12VDC)
WORKING TEMPERATURE	from -15°C to +50°C
STORAGE TEMPERATURE	from -25°C to +60°C

CONNECTORS

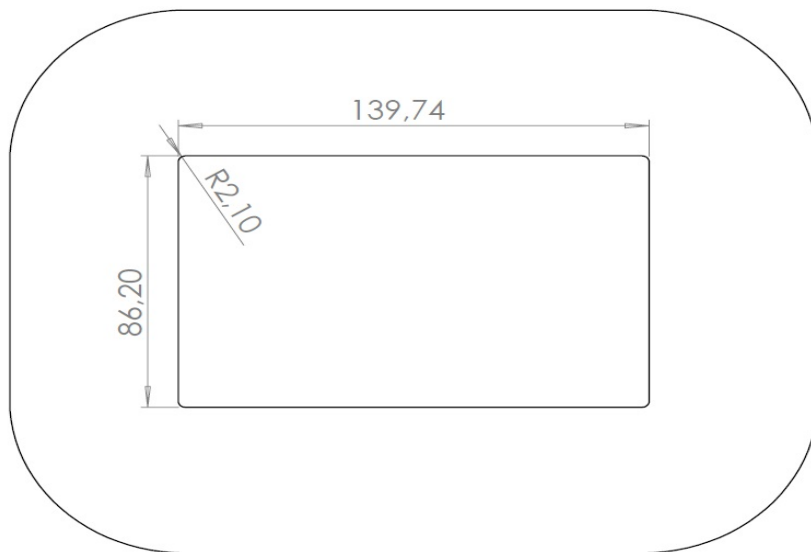
There are two inputs on board, it will be used to power on it.



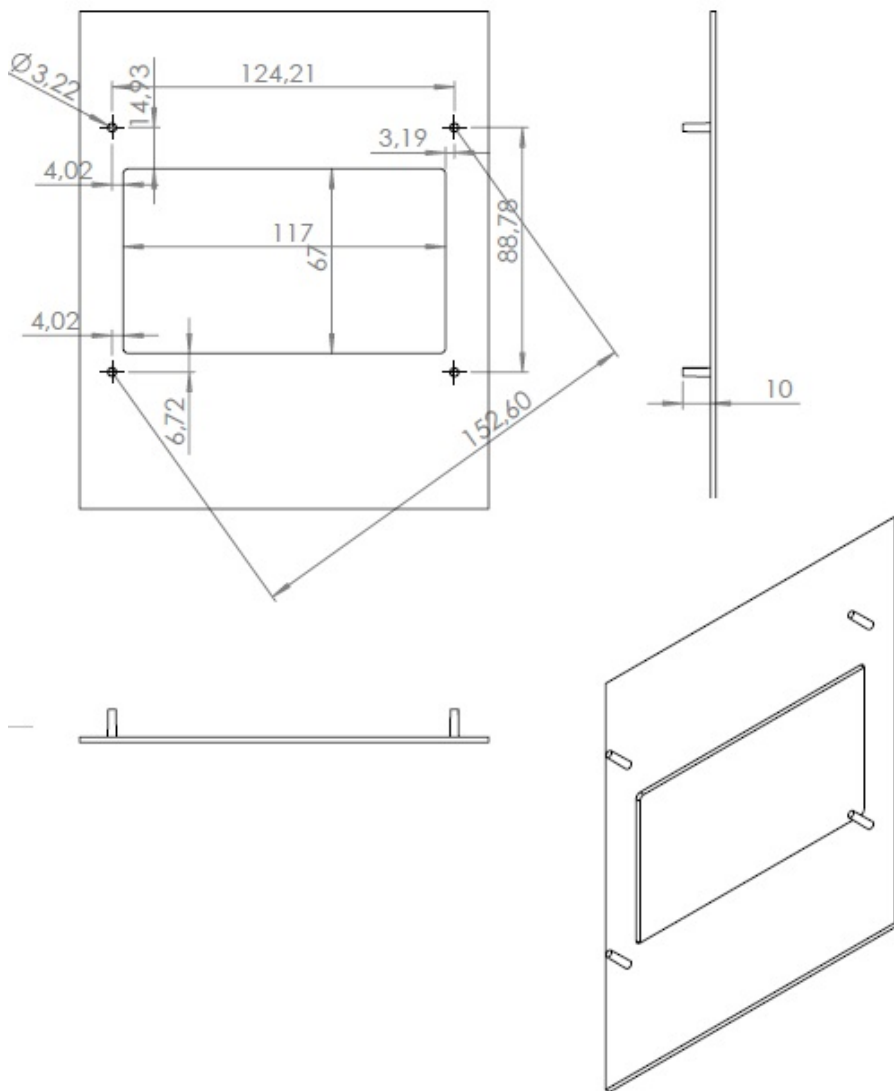
DIMENSIONS



Break-in for FRAME assembly



Break-in for FLAT assembly



Example of FRAME assembly

